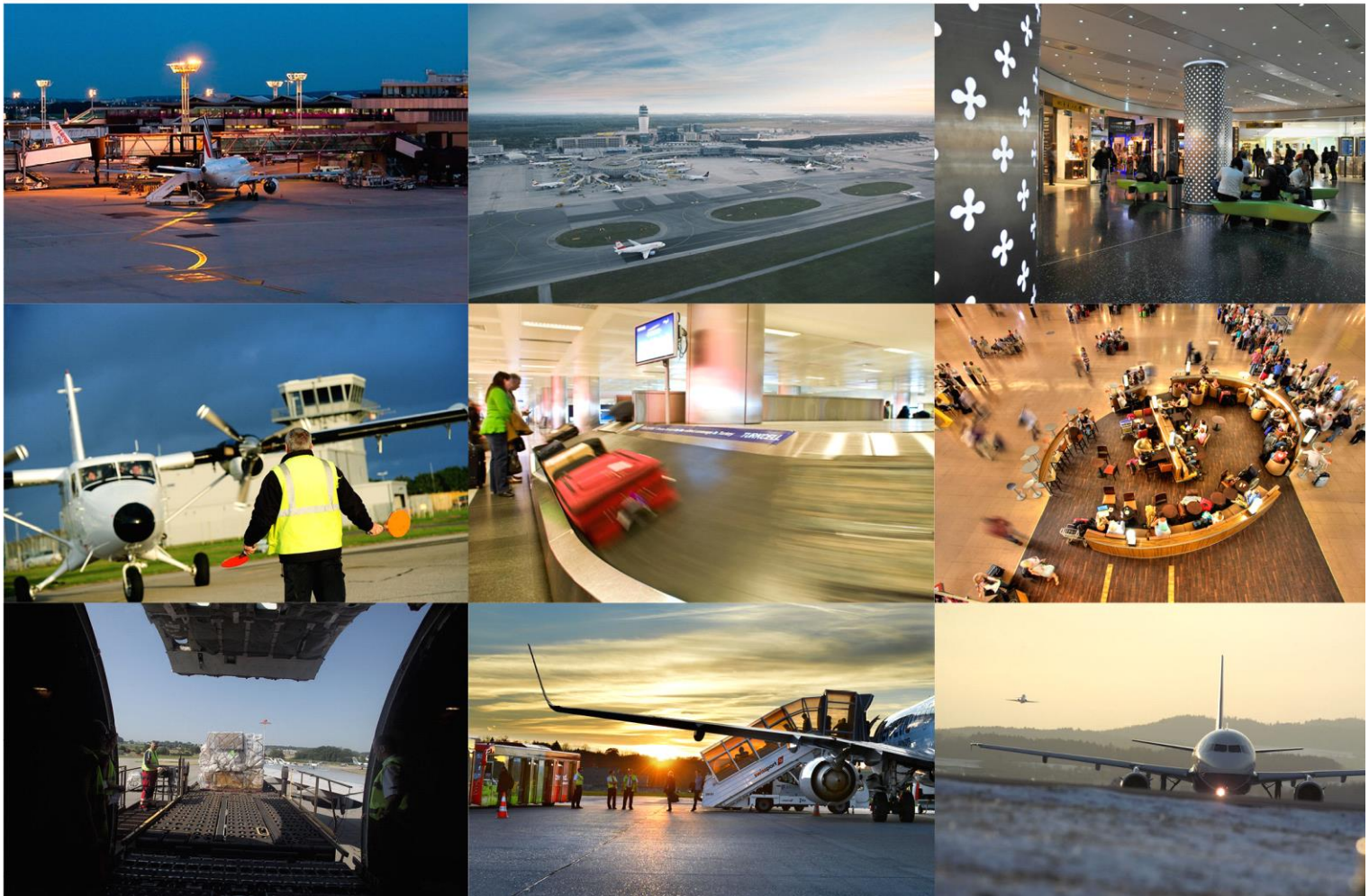




# ACI EUROPE AIRPORT TRAFFIC REPORT

SOURCE: ACI WORLD & ACI EUROPE

July 2019



# July airport traffic results reveal significant slowdown in growth

**Brussels, 16 September 2019:** European airport trade association, ACI EUROPE today releases its traffic report for **July 2019**, during which average **passenger traffic** in geographical Europe expanded by **+2.2%** compared with the same month in 2018. Standing at less than half the growth of the preceding month (June: +4.7%), this is the weakest monthly performance so far this year.

Meanwhile, **Freight traffic** declined for the 9<sup>TH</sup> month in a row at **-2.3%**. Growth in **aircraft movement** was subdued at **+1.2%** - compared to +3.8% at the start of the year.

**Olivier Jankovec, Director General of ACI EUROPE** commented "July marked a significant slowdown for Europe's airports. Passenger traffic is no longer defying economic gravity and the performance gap with freight traffic is narrowing. Beyond economic and geopolitical factors, this reflects airlines being much more cautious about capacity growth & new route openings. ATM inefficiencies, fuel & labour costs, the grounding of the B737MAX and aircraft delivery delays are all adding to demand pressures. While these demand pressures are mainly driven by economic factors, the fact that the slowdown comes primarily from a fall in domestic passenger traffic (-1.5%) may be pointing to a nascent impact of changing attitudes towards air transport - as a result of the Climate Emergency."

## EU & NON EU MARKETS ALMOST ALIGNED

Airports in the **EU market** posted an average increase of **+2.2%** in passenger traffic in July – the weakest monthly performance in more than 5 years.

The Austrian and Latvian markets were the only ones achieving double digit growth (+14.1% and +13% respectively), while airports in Portugal (+7%), Finland (+6.5%), Hungary (+6.1%), Malta (+5.3%), Croatia (+5.1%), Romania and Slovenia (+4.4%) still significantly outperformed the EU average.

At the other end of the spectrum, several national markets registered passenger traffic declines - Bulgaria (-8.8%), Slovakia (-5.3%), Sweden (-3.8%), Lithuania (-3.2%), Denmark (-0.9%) and the Netherlands (-0.1%). Growth was also either flat or weak in Luxembourg (0%), the UK (0.1%), Greece (0.5%), and Germany (+1.3%).

Amongst capital & larger EU airports, the best results were achieved by Vienna (+15.8%), Riga (+13%), Milan-Malpensa (+12%), Lisbon (+7.8%), Madrid (+7.5%), London-Luton (+6.7%), Budapest (+6.1%) and Helsinki (+5.7%).

Passenger traffic expanded by +2% at **non-EU airports** in July, with the growth being dragged down by Iceland (-29% following the bankruptcy of WOW and severe airline capacity adjustments), Georgia (-7.4%), Turkey (-0.2%) and Norway (0%). However, airports in Ukraine, Bosnia-Herzegovina, Albania and Belarus achieved impressive gains – all posting double-digit growth.

Accordingly, amongst capital & larger non-EU airports, the best performances came from: Kyiv (+25.6%), Kharkhiv (+25.1%), Sarajevo (+13.5%), Tirana (+11.4%), Antalya (+11.3%), Minsk (+10.8%) and Moscow-Sheremetyevo (+10.2%).

## MAJORS FLAT & SMALL REGIONALS HARDEST HIT

Passenger traffic **at the Majors** (top 5 European airports) was flat in July at **+0.2%**. Only Paris-CDG (+3.9%) and Frankfurt (+0.9%) were positive, while Amsterdam-Schiphol (-0.7%), London-Heathrow (-0.8%) and Istanbul-IST (-2.1%) saw passenger volumes declining.

**Smaller regional airports** (with less than 5 million passengers per annum) were the hardest hit by the slowdown, posting a decrease of **-0.9%** in passenger traffic. **53%** of them lost passenger traffic in July, compared to an industry average of 44%.

Larger regional airports as well as those serving popular tourist destinations did better, with some of them still posting significant gains: Zadar (+27.2%), Krakow (+25.8%), Sevilla (+20.6%), Nantes (+16.4%), Brest (+13.7%), Bordeaux (+13.4%), Oporto (+12.6%), Bari & Brindisi (10.8%) and Naples (+10.6%).

#### FREIGHT DECLINED LED BY EU MARKET

**Freight** traffic at **EU airports** dropped by **-3.1%** in July, while **non-EU airports** still posted an increase of +1.4%. Amongst the top 10 European airports for freight traffic, the best performance was achieved by Madrid (+8.4%) and Frankfurt (+1.3%).

During the month of **July**, airports welcoming more than 25 million passengers per year (Group 1), airports welcoming between 10 and 25 million passengers (Group 2), airports welcoming between 5 and 10 million passengers (Group 3) and airports welcoming less than 5 million passengers per year (Group 4) reported an average adjustment **+2.1%**, **+3.9%**, **+1.6%** and **-0.5%**.

The airports that reported the highest increases in passenger traffic during July 2019 (compared with July 2018) are as follows:

**GROUP 1:** Vienna (**+15.8%**), Antalya (**+11.3%**), Moscow SVO (**+10.2%**), Lisbon (**+7.8%**) and Madrid (**+7.5%**)

**GROUP 2:** Kyiv-Boryspil (**+25.6%**), Porto (**+12.6%**), Milan MXP (**+12%**), Moscow VKO (**+8.8%**) and Stuttgart (**+8.1%**)

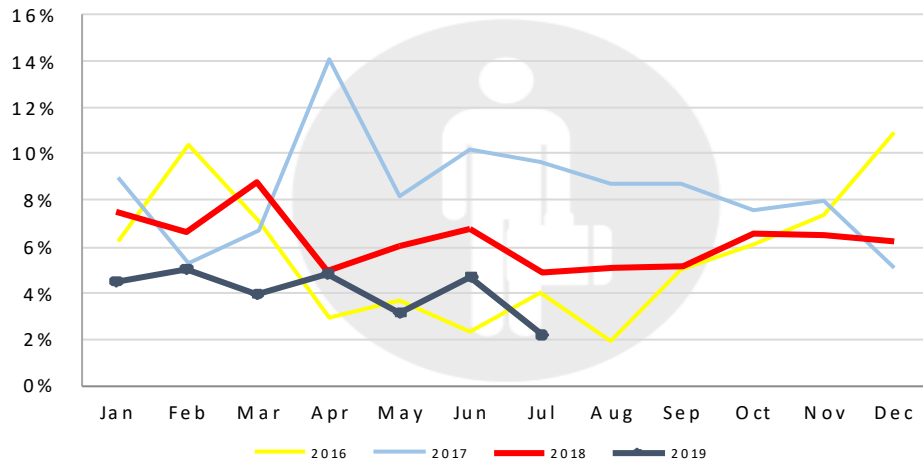
**GROUP 3:** Krakow (**+25.8%**), Seville (**+20.6%**), Nantes (**+16.4%**), Bordeaux (**+13.4%**) and Riga (**+13%**)

**GROUP 4:** Targu Mures (**+130.6%**), Tampere (**+120.3%**), Maribor (**+72.6%**), Foggia (**+66.7%**) and Turku (**+52.3%**)

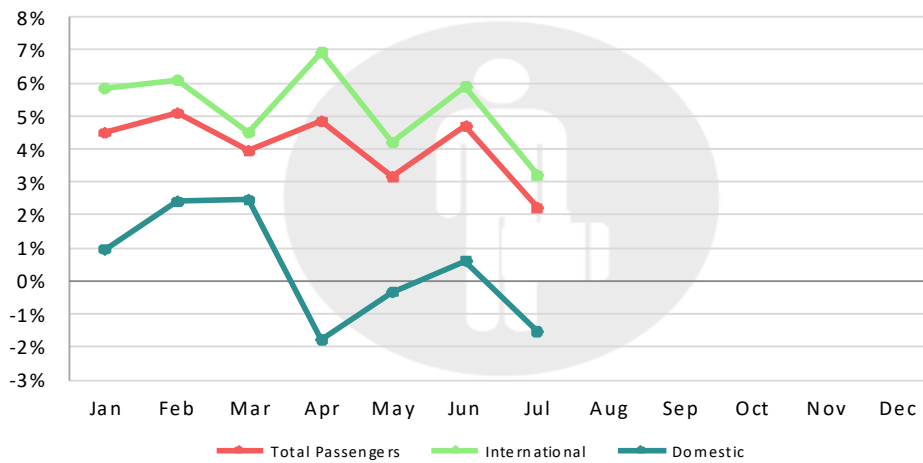
# EXECUTIVE SUMMARY (July 2019)

	July 2019/2018	YTD 2019
<b>Total Passengers</b>	<b>2.2%</b>	<b>3.9%</b>
<b>EU airports</b>	<b>2.2%</b>	<b>4.2%</b>
<b>Non-EU airports</b>	<b>2.0%</b>	<b>2.8%</b>
<b>Passengers International</b>	<b>3.2%</b>	<b>5.1%</b>
EU airports	2.6%	4.7%
Non-EU airports	5.9%	7.0%
<b>Passengers Domestic</b>	<b>-1.5%</b>	<b>0.3%</b>
EU airports	0.8%	2.6%
Non-EU airports	-5.2%	-3.6%
<b>Freight</b>	<b>-2.3%</b>	<b>-3.2%</b>
<b>EU airports</b>	<b>-3.1%</b>	<b>-3.6%</b>
<b>Non-EU airports</b>	<b>1.4%</b>	<b>-1.4%</b>
<b>Movements</b>	<b>1.2%</b>	<b>2.4%</b>
<b>EU airports</b>	<b>1.4%</b>	<b>2.7%</b>
<b>Non-EU airports</b>	<b>0.7%</b>	<b>1.2%</b>
<b>PAX + Freight Combined</b>	<b>1.0%</b>	<b>2.4%</b>
<b>Cargo only</b>	<b>3.8%</b>	<b>-1.4%</b>

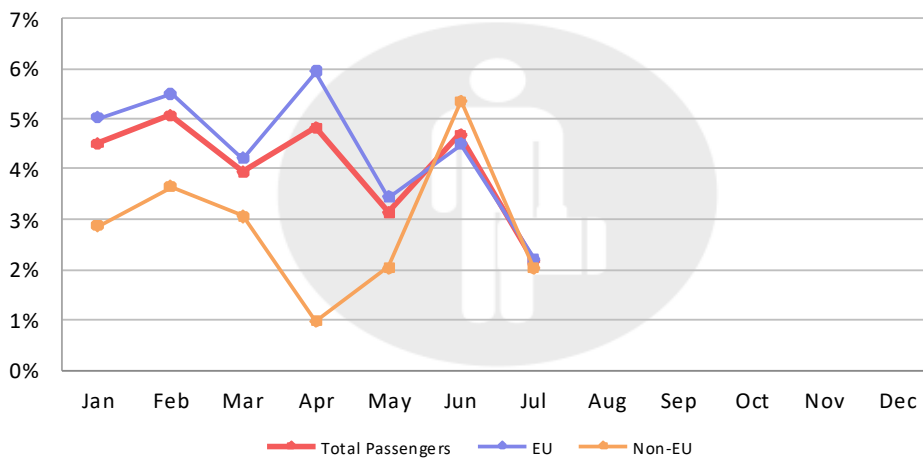
## TOTAL PASSENGER DEVELOPMENT (Year-on-year changes)



## INTERNATIONAL & DOMESTIC PASSENGERS

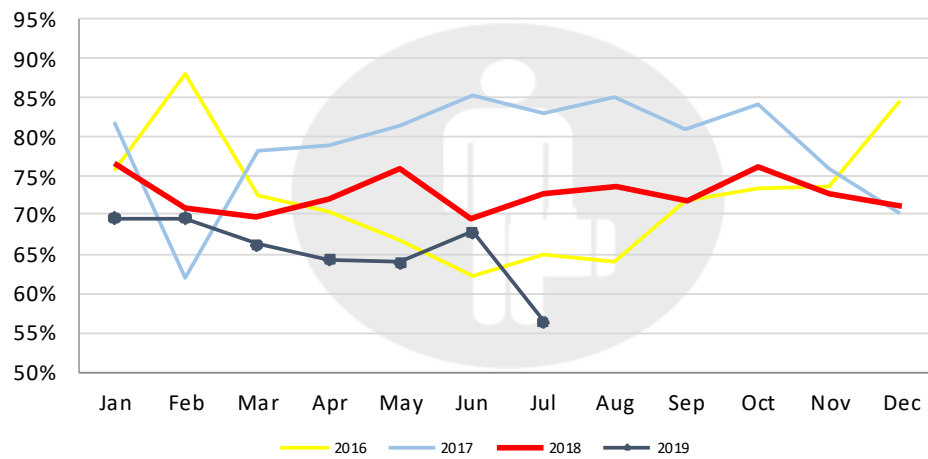


## EU/NON-EU AIRPORTS PASSENGER TRAFFIC

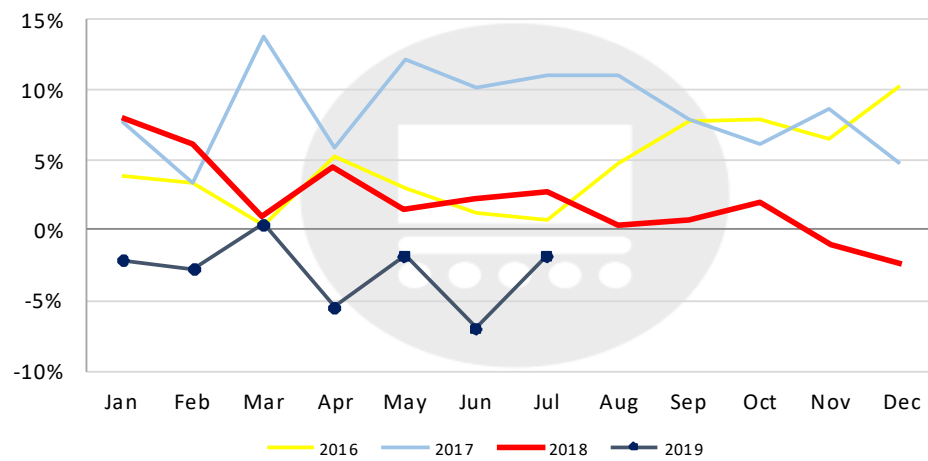




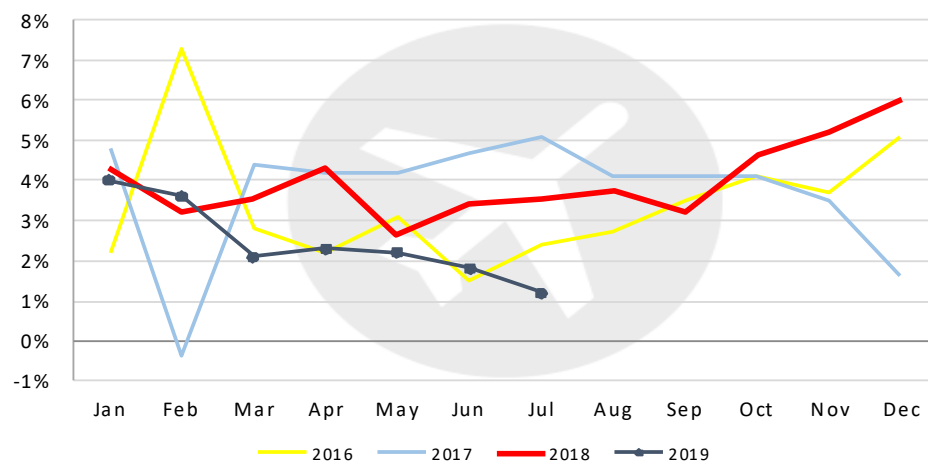
## PERCENTAGE OF AIRPORTS WITH INCREASING PASSENGER TRAFFIC



## TOTAL FREIGHT DEVELOPMENT



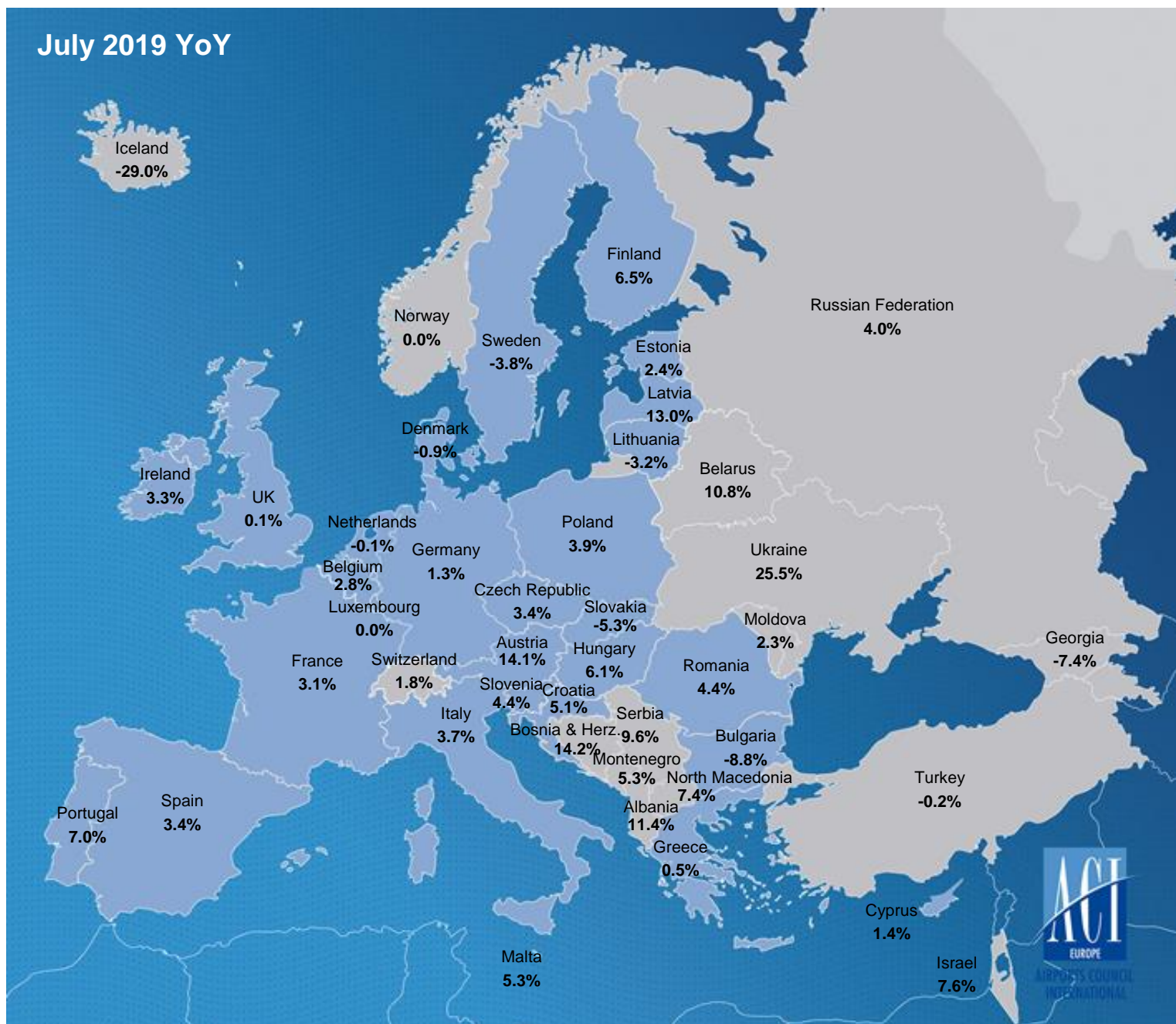
## TOTAL MOVEMENTS DEVELOPMENT



# TRAFFIC DEVELOPMENT (July 2019)

	July 2019/2018	July 2019/2017	July 2019/2016
<b>Total Passengers</b>	<b>2.2%</b>	<b>7.2%</b>	<b>17.5%</b>
EU airports	2.2%	6.6%	14.6%
Non-EU airports	2.0%	9.3%	28.4%
<b>Passengers International</b>	<b>3.2%</b>	<b>8.8%</b>	<b>19.8%</b>
EU airports	2.6%	7.3%	15.7%
Non-EU airports	5.9%	15.5%	40.2%
<b>Passengers Domestic</b>	<b>-1.5%</b>	<b>1.5%</b>	<b>9.6%</b>
EU airports	0.8%	3.6%	9.5%
Non-EU airports	-5.2%	-1.8%	9.8%
<b>Freight</b>	<b>-2.3%</b>	<b>0.1%</b>	<b>12.5%</b>
EU airports	-3.1%	-1.5%	6.9%
Non-EU airports	1.4%	8.7%	55.0%
<b>Movements</b>	<b>1.2%</b>	<b>5.0%</b>	<b>9.3%</b>
EU airports	1.4%	4.4%	7.8%
Non-EU airports	0.7%	7.4%	14.5%
<b>PAX + Freight Combined</b>	<b>1.0%</b>	<b>4.9%</b>	<b>9.7%</b>
<b>Cargo only</b>	<b>3.8%</b>	<b>6.8%</b>	<b>-0.7%</b>

## PASSENGER DEVELOPMENT EUROPEAN COUNTRIES (July 2019 YoY)





## PASSENGER TRAFFIC GROWTH BY TRAFFIC CATEGORY (July 2019)

GROUP 1		GROUP 2		GROUP 3		GROUP 4	
Over 25 million pax		Between 10 and 25 million pax		Between 5 and 10 million pax		Less than 5 million pax	
2019/2018	2019/2017	2019/2018	2019/2017	2019/2018	2019/2017	2019/2018	2019/2017
<b>2.1%</b>	<b>6.8%</b>	<b>3.9%</b>	<b>9.2%</b>	<b>1.6%</b>	<b>6.5%</b>	<b>-0.5%</b>	<b>5.9%</b>

			PASSENGERS			COMMERCIAL MOVEMENTS		FREIGHT	
			July			July		July	
CITY		CODE	2019/18		2019/17	2019/18		2019/18	
1	London	LHR	7,754,496	-0.8%	2.9%	42,062	0.7%	130,589	-6.9%
2	Paris	CDG	7,428,308	3.9%	8.2%	46,293	3.3%	156,448	-4.1%
3	Frankfurt	FRA	6,920,396	0.8%	8.3%	46,204	1.1%	168,773	1.3%
4	Amsterdam	AMS	6,724,023	-0.7%	-0.2%	44,736	-1.8%	129,143	-10.5%
5	Istanbul	IST	6,391,253	-2.1%	0.1%	39,376	-3.4%	56,103	-45.8%
6	Madrid	MAD	5,942,984	7.5%	16.8%	37,452	5.4%	46,311	8.4%
7	Antalya	AYT	5,440,850	11.3%	32.1%	28,639	7.9%	1,145	88.9%
8	Barcelona	BCN	5,358,190	3.7%	6.3%	31,861	2.4%	15,756	1.8%
9	Moscow	SVO	5,216,833	10.2%	23.6%	34,546	8.2%	19,578	-4.0%
10	London	LGW	4,738,492	-1.2%	-0.3%	27,525	-1.0%	9,596	-5.3%
11	Munich	MUC	4,689,225	5.1%	7.3%	36,093	2.7%	28,292	-7.7%
12	Rome	FCO	4,443,918	0.3%	3.9%	29,632	-0.1%	17,885	-12.8%
13	Palma De Mallorca	PMI	4,207,026	-0.6%	1.2%	26,720	-3.6%	830	-16.9%
14	Dublin	DUB	3,455,365	3.8%	10.7%	22,089	2.2%	11,920	-5.2%
15	Istanbul	SAW	3,334,760	0.4%	10.3%	21,014	-0.4%	4,864	-3.1%
16	Manchester	MAN	3,185,465	4.3%	4.8%	19,551	2.5%	10,578	0.6%
17	Vienna	VIE	3,161,400	15.8%	24.4%	25,046	12.4%	16,955	-11.0%
18	Zürich	ZRH	3,145,293	0.7%	5.6%	24,410	-0.6%	28,226	-9.8%
19	Paris	ORY	3,107,051	-4.2%	-1.7%	20,723	-3.4%	6,950	1.6%
20	Copenhagen	CPH	3,107,040	-1.2%	3.3%	22,720	-1.3%		
21	Lisbon	LIS	3,105,398	7.8%	14.6%	20,598	2.7%	12,122	16.4%
22	Moscow	DME	3,044,152	-7.1%	-13.3%	20,487	-8.8%	9,811	-4.8%
23	Athens	ATH	2,978,325	4.5%	16.4%	23,410	4.1%	7,787	2.0%
24	Milan	MLX	2,821,462	12.0%	22.7%	20,716	14.9%	50,002	-0.7%
25	Oslo	OSL	2,815,534	0.5%	6.0%	20,962	0.7%	14,541	6.8%
26	London	STN	2,758,338	-0.4%	6.8%	17,216	-0.7%	18,992	-2.1%
27	Brussels	BRU	2,730,420	2.6%	6.6%	21,148	1.7%	40,727	-9.8%
28	Moscow	VKO	2,647,005	8.8%	26.4%	15,713	-3.8%	3,842	-29.0%
29	Tel-Aviv	TLV	2,635,928	7.6%	18.8%	16,588	6.2%	27,110	-5.5%
30	Düsseldorf	DUS	2,556,776	3.5%	0.0%	20,020	3.3%	5,586	-12.3%
31	Stockholm	ARN	2,508,745	-3.6%	-2.8%	18,533	-0.4%		
32	Berlin	TXL	2,256,001	5.5%	6.1%	16,570	-0.4%	2,053	-21.9%
33	Málaga	AGP	2,226,143	3.8%	1.9%	14,390	2.9%	409	29.0%

			PASSENGERS			COMMERCIAL MOVEMENTS		FREIGHT	
			July			July		July	
	CITY	CODE	2019/18		2019/17	2019/18		2019/18	
34	St Petersburg	LED	2,206,477	4.9%	15.1%	16,430	-4.5%	2,451	16.3%
35	Helsinki	HEL	2,101,311	5.7%	18.9%	16,097	2.3%	17,920	9.3%
36	Prague	PRG	1,967,569	4.8%	15.5%	14,177	-0.5%	6,408	-2.2%
37	Warsaw	WAW	1,928,058	-0.3%	12.4%	17,198	1.4%	8,787	6.8%
38	London	LTN	1,782,944	6.7%	8.6%	11,015	7.7%	2,838	33.8%
39	Hamburg	HAM	1,726,237	1.1%	-1.9%	13,035	0.6%	2,423	-17.4%
40	Alicante	ALC	1,721,305	7.7%	5.5%	10,863	7.1%	392	14.3%
41	Nice	NCE	1,687,853	3.4%	5.1%	20,536	3.1%	1,211	-20.9%
42	Geneva	GVA	1,675,291	2.6%	1.9%	12,678	2.1%	4,707	-17.2%
43	Kyiv	KBP	1,625,302	25.6%	42.2%	10,786	20.4%	3,437	0.4%
44	Budapest	BUD	1,602,651	6.1%	20.7%	10,796	4.8%	7,836	-6.5%
45	Edinburgh	EDI	1,508,540	0.4%	6.9%	12,086	0.5%	1,820	6.3%
46	Bucharest	OTP	1,467,252	5.2%	14.6%	11,607	-0.3%	3,215	-4.2%
47	Heraklion	HER	1,385,309	-2.9%	1.6%				
48	Birmingham	BHX	1,353,617	3.1%	-5.8%	10,172	0.6%	3,154	-5.3%
49	Milan	BGY	1,348,146	6.2%	7.6%	8,714	4.8%	10,811	-3.8%
50	Ibiza	IBZ	1,330,780	0.5%	-2.7%	9,367	-1.6%	164	-10.9%
51	Cologne	CGN	1,300,001	-3.4%	0.9%	12,767	0.8%	70,411	0.9%
52	Porto	OPO	1,296,859	12.6%	21.1%	9,470	8.7%	3,567	12.3%
53	Stuttgart	STR	1,295,033	8.1%	13.7%	11,226	5.9%	2,156	-2.0%
54	Izmir	ADB	1,279,860	-6.9%	-1.8%	7,743	-7.0%	2,941	189.8%
55	Venice	VCE	1,269,920	1.5%	9.3%	9,402	-0.3%	5,216	-7.9%
56	Ankara	ESB	1,225,220	-20.9%	-22.4%	7,842	-19.9%	987	-1.7%
57	Lyon	LYS	1,187,020	7.5%	13.5%	10,747	4.5%	5,189	3.4%
58	Faro	FAO	1,172,579	2.2%	-1.9%	7,441	1.8%	10	25.0%
59	Naples	NAP	1,165,143	10.6%	16.4%	8,028	9.5%	935	29.3%
60	Catania	CTA	1,114,763	3.1%	10.2%	7,682	2.0%	145	-55.4%
61	Berlin	SXF	1,102,650	-8.9%	-6.2%	7,342	-10.9%	1,058	10.7%
62	Larnaca	LCA	1,072,597	0.1%	1.6%	6,796	-7.7%	2,606	0.5%
63	Gran Canaria	LPA	1,068,469	-4.3%	-1.7%	9,690	-3.2%	1,727	9.9%
64	Marseille	MRS	1,050,497	8.6%	10.5%	9,609	7.4%	5,498	19.6%
65	Rhodes	RHO	1,027,532	-1.5%	3.1%				
66	Glasgow	GLA	967,463	-9.3%	-10.7%	7,789	-6.3%	1,102	-9.9%
67	Bologna	BLQ	917,800	8.7%	9.6%	6,867	7.2%	3,753	0.1%
68	Basel	BSL	917,434	4.4%	11.9%	7,481	5.2%	5,283	0.8%
69	Tenerife	TFS	884,269	-0.7%	-4.1%	5,140	-0.9%	140	-15.2%
70	Valencia	VLC	856,305	8.4%	19.4%	6,279	4.1%	1,279	-4.8%
71	Sochi	AER	853,497	0.9%	11.4%	5,892	-0.1%	218	4.3%
72	Toulouse	TLS	851,490	-3.5%	-0.5%	7,397	-2.6%	5,082	-0.3%
73	Keflavik	KEF	843,473	-29.0%	-23.3%	5,231	-25.7%	3,913	-13.6%
74	Bourgas	BOJ	839,693	-11.4%	-6.2%	5,072	-13.5%	253	-51.8%
75	Bordeaux	BOD	837,989	13.4%	25.3%	6,794	10.2%	1,027	10.1%
76	Riga	RIX	835,823	13.0%	29.3%	7,977	8.3%	1,257	6.8%
77	Charleroi	CRL	807,172	3.4%	1.1%	4,763	3.2%	49	-70.1%
78	Thessaloniki	SKG	800,269	-1.2%	6.1%				
79	Malta	MLA	799,421	5.3%	18.0%	5,323	3.5%	1,249	-8.4%
80	Krakow	KRK	785,557	25.8%	42.0%	5,267	19.4%	122	17.3%
81	Bodrum	BJV	781,115	1.0%	20.0%	4,732	-1.2%	20	185.7%
82	Palermo	PMO	776,971	7.4%	22.1%	5,534	8.0%	36	56.5%

			PASSENGERS			COMMERCIAL MOVEMENTS		FREIGHT	
			July			July		July	
	CITY	CODE	2019/18		2019/17	2019/18		2019/18	
83	Nantes	NTE	767,744	16.4%	30.1%	6,283	8.1%	825	11.8%
84	Belgrade	BEG	734,898	9.5%	16.6%	6,856	10.5%	1,422	-37.0%
85	Milan	LIN	730,424	-18.7%	-22.8%	7,340	-16.2%	865	-9.5%
86	Split	SPU	720,835	3.9%	10.0%	5,104	1.7%	35	6.1%
87	Hanover	HAJ	712,681	-1.8%	7.9%	5,543	-0.3%	1,236	104.6%
88	Göteborg	GOT	687,354	-1.5%	0.4%	5,534	-0.5%	1,676	19.5%
89	Sofia	SOF	663,738	1.1%	8.3%	4,995	0.4%	1,977	23.1%
90	Eindhoven	EIN	659,079	6.7%	17.4%	3,831	7.4%		
91	Corfou	CFU	654,985	-4.3%	6.5%				
92	Lanzarote	ACE	649,092	-2.4%	-6.1%	5,059	-1.1%	104	-15.4%
93	Sevilla	SVQ	641,054	20.6%	48.4%	4,630	20.6%	764	-29.1%
94	Menorca	MAH	638,713	0.8%	-2.6%	4,755	0.8%	116	-5.7%
95	Newcastle	NCL	606,418	-2.6%	-2.0%	4,200	-5.3%	87	135.1%
96	Bilbao	BIO	602,231	8.6%	17.6%	4,564	5.4%	78	-27.8%
97	Bergen	BGO	593,518	1.5%	5.0%	7,055	6.9%	356	3.8%
98	Bari	BRI	593,001	10.8%	21.1%	4,211	9.7%	28	64.7%
99	Minsk	MSQ	589,506	10.8%	19.4%	5,427	8.4%	720	11.1%
100	Cagliari	CAG	587,214	8.1%	9.2%	4,359	9.1%	108	-25.5%
101	East Midlands	EMA	570,659	-0.9%	-3.0%	5,950	-2.4%	28,447	3.3%
102	Tenerife	TFN	541,128	2.9%	23.8%	6,384	3.7%	765	-16.5%
103	Rome	CIA	523,923	2.0%	1.4%	3,075	1.6%	1,664	7.5%
104	Dubrovnik	DBV	514,723	8.4%	16.4%	3,752	5.8%	14	-30.0%
105	Kos	KGS	510,426	-0.9%	10.0%				
106	Chania	CHQ	509,001	-2.2%	-4.9%				
107	Fuerteventura	FUE	504,746	-9.4%	-9.4%	4,025	-9.0%	50	-24.2%
108	Trabzon	TZX	472,386	3.9%	1.3%	2,872	6.3%	71	163.0%
109	Verona	VRN	464,733	3.2%	11.5%	3,519	-0.4%	142	358.1%
110	Vilnius	VNO	448,647	-6.4%	229.9%	3,952	-2.4%	979	16.3%
111	Adana	ADA	430,893	-14.0%	-15.9%	2,595	-16.0%	354	44.5%
112	Billund	BLL	424,064	1.1%	0.0%	3,709	1.3%	6,210	-1.0%
113	Zakynthos Island	ZTH	414,244	2.3%	11.6%				
114	Nürnberg	NUE	414,225	-8.6%	-5.1%	3,957	-9.4%	478	-21.1%
115	Varna	VAR	407,724	-16.9%	-8.1%	2,587	-19.4%	18	28.6%
116	Luxembourg	LUX	396,597	0.0%	9.9%	6,183	3.2%	68,820	-7.1%
117	Tirana	TIA	385,388	11.4%	31.5%	2,978	13.6%	168	13.5%
118	Tbilisi	TBS	384,632	-10.4%	3.6%	3,558	-10.7%	2,399	-6.8%
119	Santorini Thira	JTR	382,251	0.2%	12.2%				
120	Wroclaw	WRO	382,233	3.5%	22.9%	2,789	2.0%	26	-3.7%
121	Stavanger	SVG	373,526	0.6%	2.6%	5,206	10.3%	916	-12.0%
122	Paphos	PFO	370,439	5.3%	16.7%	2,164	5.9%	18	50.0%
123	Zagreb	ZAG	365,378	-3.5%	4.5%	3,976	-1.3%	848	-8.5%
124	Turin	TRN	344,067	-5.3%	-11.3%	2,867	-13.3%	27	17.4%
125	Chisinau	KIV	340,428	2.3%	2.1%	2,888	-3.9%	214	-5.7%
126	Trondheim	TRD	338,412	-4.2%	-2.7%	3,800	-5.8%	170	11.8%
127	Bratislava	BTS	331,133	-5.3%	8.8%	2,250	-7.7%	1,638	-16.4%
128	Mikonos	JMK	328,022	5.5%	21.3%				
129	Tallinn	TLL	319,016	2.4%	16.9%	3,616	-6.1%	672	-6.7%
130	Brindisi	BDS	308,034	10.8%	11.7%	1,980	11.2%	1	0.0%
131	Funchal	FNC	305,132	-2.0%	-3.7%	2,174	-4.6%	422	65.5%

			PASSENGERS			COMMERCIAL MOVEMENTS		FREIGHT	
			July			July		July	
	CITY	CODE	2019/18		2019/17	2019/18		2019/18	
132	Cluj	CLJ	304,585	2.9%	7.0%	2,426	4.0%	303	36.5%
133	Cork	ORK	296,867	8.4%	8.6%	2,270	4.9%	5	-16.7%
134	Rostov	ROV	296,467	-9.4%	9.5%	2,296	-11.7%	349	10.1%
135	Girona	GRO	293,971	-5.1%	-2.6%	1,746	-6.4%	2	-88.9%
136	Poznan	POZ	292,340	-10.0%	28.8%	2,079	-10.5%	7	40.0%
137	Treviso	TSF	287,349	-3.0%	-8.0%	1,628	-3.8%		
138	Aberdeen	ABZ	284,071	-3.5%	16.4%	7,185	0.7%	543	-1.3%
139	Florence	FLR	282,729	1.8%	1.2%	2,834	2.6%	6	20.0%
140	Pristina	PRN	280,013	9.4%	19.6%	2,088	15.6%	102	1.0%
141	Tivat	TIV	279,795	8.8%	12.3%	1,011	4.0%	4	-20.0%
142	Stockholm	NYO	250,919	2.8%	0.9%	1,410	-0.4%	27	200.0%
143	Ponta Delgada	PDL	248,771	6.1%	10.7%	2,400	8.6%	473	-2.3%
144	Skopje	SKP	241,836	1.7%	19.7%	1,878	9.2%	385	78.2%
145	Lille	LIL	241,221	7.3%	9.8%	2,112	-3.0%	4	-84.6%
146	Ajaccio	AJA	236,981	-4.9%	-1.5%			688	37.1%
147	Bastia	BIA	228,772	-2.2%	5.6%			514	30.8%
148	Bremen	BRE	227,915	-13.7%	-14.2%			47	-9.6%
149	Ljubljana	LJU	207,292	4.2%	4.6%	2,542	-6.2%	898	-5.4%
150	Tromsoe	TOS	198,125	-2.4%	3.5%	2,868	-3.9%	164	29.1%
151	Shannon	SNN	194,350	-10.3%	-4.7%	1,376	-8.1%	1,071	-4.1%
152	Jersey	JER	187,903	1.2%	5.9%	2,547	4.9%	54	-46.0%
153	Southampton	SOU	183,608	-9.4%	-16.5%	2,991	-4.8%	19	-17.4%
154	Sarajevo	SJJ	180,929	13.5%	29.2%	1,434	14.0%	165	7.8%
155	Memmingerberg	FMM	177,611	20.7%	70.9%	1,057	18.4%		
156	Kefallinia	EFL	169,160	3.5%	22.5%				
157	Bodo	BOO	166,955	-1.4%	-1.0%	2,774	1.2%	101	14.8%
158	Podgorica	TGD	164,835	-0.2%	12.7%	754	-0.3%	61	-16.4%
159	Stockholm	BMA	157,259	-6.8%	-4.1%	2,698	-1.3%	9	-55.0%
160	Malmo	MMX	155,960	-13.3%	-9.6%	1,495	-15.5%	1,682	-9.9%
161	Biarritz	BIQ	151,213	-2.3%	-1.5%	1,261	-3.5%		
162	Hahn	HHN	146,246	-32.5%	-41.6%	1,455	4.7%	10,569	-9.2%
163	Timisoara	TSR	146,238	2.9%	-6.9%	1,431	2.9%	462	-11.8%
164	Salzburg	SZG	146,092	-1.7%	-6.3%	1,427	-4.9%	8	-38.5%
165	Zadar	ZAD	144,956	27.2%	26.6%	1,214	10.6%	1	-66.7%
166	Iasi	IAS	132,721	0.6%	12.1%	1,124	-8.5%		
167	Kharkiv	HRK	130,668	25.1%	49.8%	904	11.1%	18	12.5%
168	Strasbourg	SXB	130,239	2.5%	12.4%	1,756	-1.1%	5	150.0%
169	Brest	BES	125,612	13.7%	19.9%	1,386	5.9%	337	130.8%
170	Muenster	FMO	121,046	-8.2%	-5.2%	1,149	-12.8%	18	157.1%
171	Brno	BRQ	117,255	1.2%	23.2%	833	-7.3%	324	17.8%
172	Kaunas	KUN	114,284	17.6%	-51.5%	924	6.0%	276	40.1%
173	Graz	GRZ	107,642	-0.8%	12.4%	1,434	0.6%	10	-28.6%
174	Batumi	BUS	100,432	-9.8%	-0.2%	834	-20.6%		
175	Aalesund	AES	95,524	-2.6%	4.3%	994	0.9%	75	19.0%
176	Harstad	EVE	90,710	4.5%	6.5%	900	22.1%	27	0.0%
177	Luleå	LLA	89,644	-3.7%	-3.7%	710	1.6%	21	-32.3%
178	Kristiansand	KRS	84,947	0.8%	5.8%	1,179	7.6%	80	31.1%
179	Kutaisi	KUT	84,866	12.6%	72.9%	502	1.6%		
180	Isle Of Man	IOM	76,813	3.0%	9.6%	1,776	-8.0%	16	-23.8%

			PASSENGERS			COMMERCIAL MOVEMENTS		FREIGHT	
			July			July		July	
	CITY	CODE	2019/18		2019/17	2019/18		2019/18	
181	Trieste	TRS	75,537	0.6%	-12.6%	766	3.1%	4	100.0%
182	Ostrava	OSR	75,185	-11.1%	16.8%	655	-18.1%	166	220.0%
183	Sibiu	SBZ	74,089	-8.8%	40.2%	680	-16.3%	2	-33.3%
184	Visby	VBY	69,849	-16.3%	-18.6%	1,232	-10.1%	14	-39.1%
185	Mytilene	MJT	65,999	-0.5%	7.9%				
186	Calvi	CLY	62,656	0.0%	-5.0%			1	0.0%
187	Umeå	UME	61,958	-8.9%	-0.5%	744	-16.0%	21	-25.0%
188	Oulu	OUL	61,764	-0.2%	19.4%				
189	Ostend	OST	59,966	3.7%	20.2%	440	-9.5%	1,357	-26.0%
190	Newquay	NQY	58,940	-0.4%	-4.8%	1,039	16.0%		
191	Craiova	CRA	53,107	4.4%	6.5%	338	2.1%		
192	Bacau	BCM	52,887	8.9%	22.6%	380	-5.0%		
193	Ohrid	OHD	51,981	44.7%	83.8%	392	54.3%		
194	Friedrichshafen	FDH	47,783	-21.9%	-18.9%	622	-10.4%		
195	La Rochelle	LRH	46,266	3.6%	9.1%	531	4.5%		
196	Trapani	TPS	40,589	-6.7%	-73.7%	397	-7.7%	2	-33.3%
197	Clermont-Ferrand	CFE	39,391	-4.0%	17.7%	719	-6.6%	236	500.0%
198	Turku	TKU	39,289	52.3%	62.3%				
199	Molde	MOL	36,895	-3.8%	-14.7%	455	9.4%	16	14.3%
200	Alta	ALF	36,567	-7.6%	-3.9%	524	-9.8%	83	50.9%
201	Nis	INI	35,646	11.9%	10.5%	252	24.8%	127	111.7%
202	Lublin	LUZ	34,794	-18.9%	-23.6%	236	-27.6%		
203	Palanga	PLQ	32,462	-15.6%	-9.7%	354	-22.5%		
204	Caen	CFR	32,119	-4.6%	19.9%	482	-17.3%		
205	Rovaniemi	RVN	30,969	11.8%	11.6%				
206	Kirkenes	KKN	30,507	-0.5%	-0.2%	601	14.7%	46	35.3%
207	Kristiansund	KSU	30,411	23.6%	25.2%	719	7.5%	9	80.0%
208	Angelholm	AGH	27,172	-0.8%	0.5%	557	9.2%		
209	Svalbard	LYR	26,797	6.7%	12.0%	331	-5.7%	64	52.4%
210	Kiruna	KRN	26,415	-6.3%	-1.9%	244	-0.4%	1	-83.3%
211	Nimes	FNI	25,629	-2.6%	-2.4%	197	-2.5%		
212	Bardufoss	BDU	24,509	-2.9%	-3.2%	162	-5.8%	7	40.0%
213	Liège	LGG	24,476	-0.9%	-21.9%	2,641	2.0%	72,444	0.2%
214	Ostersund	OSD	22,990	-8.0%	-12.6%	397	0.5%	6	-25.0%
215	Klagenfurt	KLU	21,256	-10.8%	-2.7%	322	-7.7%		
216	Vaasa	VAA	20,715	2.3%	26.9%				
217	Targu Mures	TGM	16,482	130.6%		304	155.5%		
218	Tampere	TMP	14,089	120.3%	-21.9%				
219	Bronnoysund	BNN	13,387	12.1%	28.0%	601	11.9%	4	33.3%
220	Leknes	LKN	12,047	-6.0%	-11.3%	451	-11.0%	7	133.3%
221	Floro	FRO	11,642	2.5%	18.3%	723	8.7%	5	-37.5%
222	Hammerfest	HFT	11,408	-20.4%	-19.8%	706	-16.1%	17	-26.1%
223	Pardubice	PED	11,096	-47.5%	7.5%	68	-47.3%		
224	Ronneby	RNB	9,673	-14.6%	-19.6%	207	-8.0%		
225	Monaco	MCM	8,647	4.2%	4.3%	3,828	7.6%		
226	Orsta	HOV	7,537	-7.7%	-7.4%	298	-4.5%	2	0.0%
227	Vadso	VDS	6,826	-3.2%	-4.1%	512	0.8%		
228	Sandnessjoen	SSJ	6,668	1.0%	-15.7%	292	2.1%		
229	Mo i Rana	MQN	6,517	-13.0%	-23.6%	286	-22.5%	14	0.0%

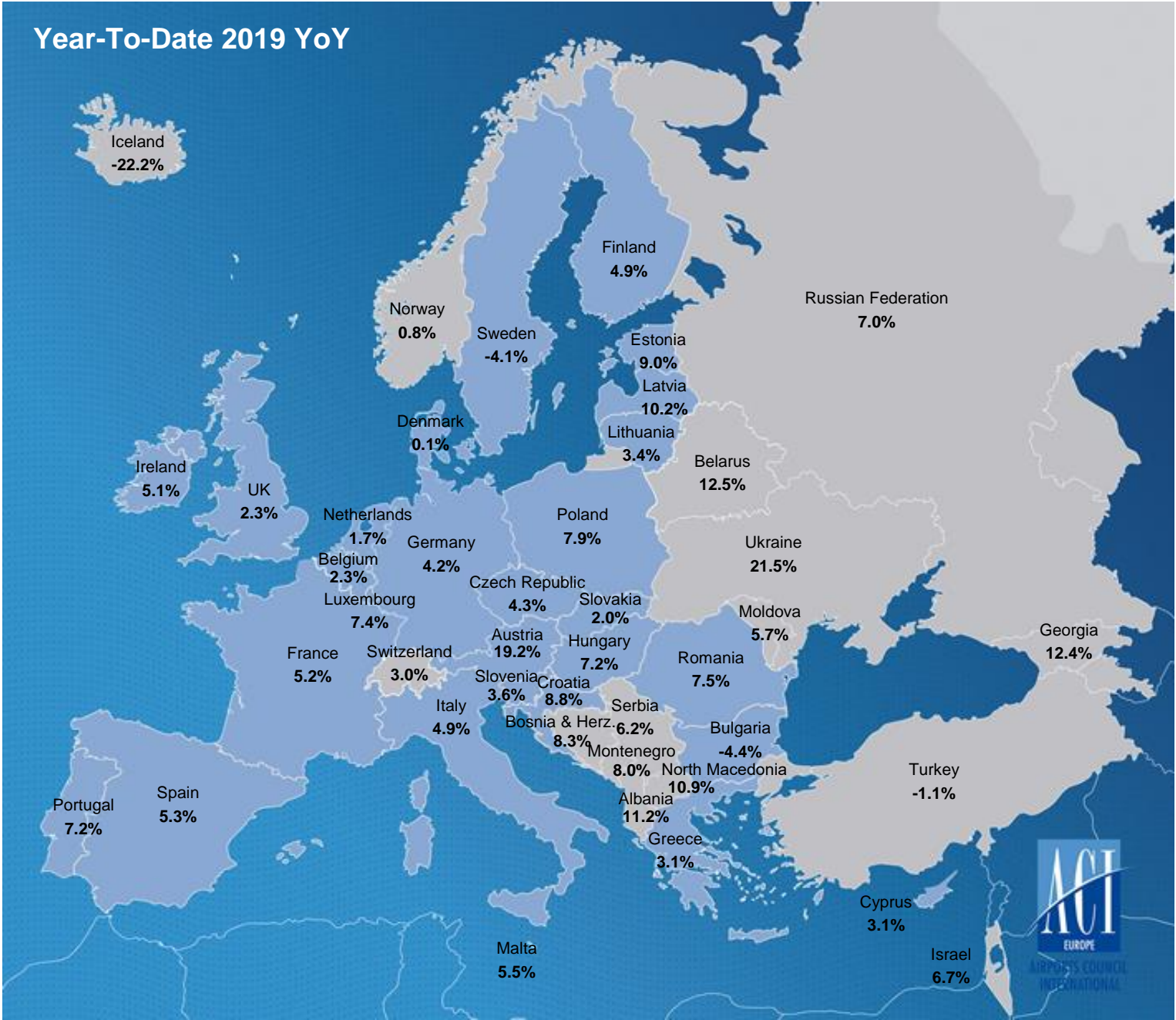


			PASSENGERS			COMMERCIAL MOVEMENTS		FREIGHT	
			July			July		July	
CITY		CODE	2019/18		2019/17	2019/18		2019/18	
230	Stokmarknes	SKN	6,386	-17.1%	-28.3%	297	-20.4%	8	100.0%
231	Mosjoen	MJF	6,260	17.8%	7.4%	331	9.2%		
232	Forde	FDE	5,837	-0.8%	5.4%	342	15.9%		
233	Sogndal	SOG	5,653	-14.4%	-19.2%	404	-11.8%		
234	Mostar	OMO	4,677	47.4%	-10.1%	75	10.3%		
235	Bucharest	BBU	2,039	44.7%	93.6%	193	22.2%		
236	Saint-Nazaire	SNR	903	-29.5%	-13.1%	118	0.0%	1,469	1.2%
237	Maribor	MBX	780	72.6%	249.8%	14	-50.0%		
238	Chambery	CMF	664	3.1%	-23.9%	191	-2.1%		
239	Grenoble	GNB	178	-94.7%	-95.2%	82	57.7%		
240	Foggia	FOG	55	66.7%	-1.8%				
241	Taranto	TAR	40	-52.4%	33.3%	22	57.1%	667	44.7%
242	Istanbul	ISL				1,377	-96.6%	56,816	-45.1%

## TRAFFIC DEVELOPMENT (Year-To-Date July 2019)

	YTD 2019/2018	YTD 2019/2017	YTD 2019/2016
<b>Total Passengers</b>	<b>3.9%</b>	<b>10.3%</b>	<b>19.9%</b>
EU airports	4.2%	9.7%	18.9%
Non-EU airports	2.8%	12.6%	23.6%
<b>Passengers International</b>	<b>5.1%</b>	<b>12.1%</b>	<b>23.2%</b>
EU airports	4.7%	10.8%	21.1%
Non-EU airports	7.0%	18.4%	33.9%
<b>Passengers Domestic</b>	<b>0.3%</b>	<b>4.5%</b>	<b>8.8%</b>
EU airports	2.6%	5.0%	9.3%
Non-EU airports	-3.6%	3.6%	7.8%
<b>Freight</b>	<b>-3.2%</b>	<b>0.6%</b>	<b>11.2%</b>
EU airports	-3.6%	-1.1%	6.8%
Non-EU airports	-1.4%	10.5%	42.9%
<b>Movements</b>	<b>2.4%</b>	<b>5.8%</b>	<b>9.0%</b>
EU airports	2.7%	5.4%	9.0%
Non-EU airports	1.2%	7.2%	9.0%
<b>PAX + Freight Combined</b>	<b>2.4%</b>	<b>5.7%</b>	<b>9.6%</b>
<b>Cargo only</b>	<b>-1.4%</b>	<b>-1.0%</b>	<b>-5.2%</b>

PASSENGER DEVELOPMENT EUROPEAN COUNTRIES (Year-To-Date 2019 YoY)



## PASSENGER TRAFFIC GROWTH BY TRAFFIC CATEGORY (Year-To-Date 2019)

GROUP 1		GROUP 2		GROUP 3		GROUP 4	
Over 25 million pax		Between 10 and 25 million pax		Between 5 and 10 million pax		Less than 5 million pax	
2019/2018	2019/2017	2019/2018	2019/2017	2019/2018	2019/2017	2019/2018	2019/2017
<b>3.6%</b>	<b>9.7%</b>	<b>5.7%</b>	<b>12.3%</b>	<b>3.7%</b>	<b>11.5%</b>	<b>1.7%</b>	<b>9.1%</b>

			PASSENGERS			COMMERCIAL MOVEMENTS		FREIGHT	
			YTD July2019			YTD July2019		YTD July2019	
CITY		CODE	2019/18		2019/17	2019/18		2019/18	
1	London	LHR	46,507,638	1.3%	4.1%	277,421	0.7%	936,542	-4.6%
2	Paris	CDG	43,786,849	6.6%	10.0%	287,320	5.0%	1,102,577	-2.2%
3	Amsterdam	AMS	41,261,351	1.1%	5.7%	286,843	-0.4%	896,635	-8.8%
4	Frankfurt	FRA	40,564,329	2.6%	11.6%	293,016	2.1%	1,173,713	-1.9%
5	Madrid	MAD	35,213,027	6.7%	15.6%	235,962	4.6%	308,719	5.6%
6	Barcelona	BCN	30,169,476	5.2%	11.2%	191,431	3.5%	99,435	2.9%
7	Moscow	SVO	28,620,433	13.4%	28.0%	219,332	13.7%	127,288	-1.5%
8	Munich	MUC	27,434,945	4.8%	7.6%	230,291	2.7%	190,874	-6.1%
9	London	LGW	26,962,752	2.0%	3.0%	166,105	1.8%	63,107	0.9%
10	Rome	FCO	24,990,113	1.8%	6.4%	178,705	2.8%	105,717	-8.1%
11	Istanbul	IST	22,620,510	-42.3%	-35.6%	141,943	-45.2%	185,904	-69.7%
12	Istanbul	SAW	20,080,135	2.9%	15.2%	131,336	2.1%	33,747	-5.4%
13	Antalya	AYT	19,110,517	12.8%	41.9%	107,238	10.0%	5,506	34.4%
14	Paris	ORY	19,091,717	-0.8%	2.0%	131,450	-0.6%	50,258	2.2%
15	Dublin	DUB	19,001,919	5.6%	12.2%	132,828	3.9%	74,450	-13.5%
16	Zürich	ZRH	18,044,284	2.1%	8.3%	151,127	1.1%	194,456	-7.2%
17	Vienna	VIE	17,827,655	22.4%	29.5%	151,882	15.0%	114,810	-6.4%
18	Lisbon	LIS	17,717,302	6.8%	19.3%	124,927	2.3%	78,184	10.7%
19	Copenhagen	CPH	17,515,704	-0.4%	3.0%	148,337	-0.6%		
20	Manchester	MAN	16,846,289	5.4%	6.2%	111,954	2.0%	62,843	-2.4%
21	Palma De Mallorca	PMI	16,790,861	4.2%	8.1%	115,622	1.6%	5,351	-11.4%
22	Oslo	OSL	16,453,500	0.4%	4.4%	140,512	-1.6%	96,399	3.6%
23	London	STN	16,278,476	3.0%	10.6%	107,303	2.3%	121,854	-7.5%
24	Istanbul	ISL	16,045,923	-59.0%		113,925	-56.0%	527,225	-24.8%
25	Moscow	DME	15,792,028	-6.7%	-9.1%	117,980	-9.4%	58,582	-14.9%
26	Milan	MXP	15,370,732	10.5%	22.5%	118,589	11.2%	313,557	-5.8%
27	Stockholm	ARN	14,998,893	-4.5%	-2.7%	130,664	-3.1%	14,459	-56.7%
28	Brussels	BRU	14,996,836	2.0%	6.4%	125,352	-0.3%	281,924	-10.2%
29	Düsseldorf	DUS	14,529,120	9.1%	1.3%	124,613	8.6%	37,890	-11.2%
30	Athens	ATH	14,228,192	7.0%	19.0%	117,435	7.1%	49,858	-0.1%
31	Berlin	TXL	14,047,946	21.5%	14.9%	110,525	13.4%	12,161	-24.4%
32	Tel-Aviv	TLV	13,475,164	6.7%	20.2%	86,562	4.1%	191,364	-1.9%
33	Moscow	VKO	13,368,826	12.8%	49.4%	89,991	0.9%	26,389	-25.2%

			PASSENGERS			COMMERCIAL MOVEMENTS		FREIGHT	
			YTD July2019			YTD July2019		YTD July2019	
CITY		CODE	2019/18		2019/17	2019/18		2019/18	
34	Helsinki	HEL	12,721,801	5.1%	17.8%	110,320	2.5%	112,388	6.4%
35	Málaga	AGP	11,426,208	6.0%	8.1%	77,386	5.9%	1,693	13.3%
36	St Petersburg	LED	10,974,250	9.1%	20.7%	95,980	2.9%	14,649	-0.5%
37	Geneva	GVA	10,717,245	1.5%	3.0%	88,125	2.2%	33,921	-8.0%
38	Warsaw	WAW	10,525,271	5.9%	21.1%	105,431	5.8%	53,481	4.2%
39	London	LTN	10,316,082	8.9%	11.9%	65,670	8.2%	20,285	52.2%
40	Hamburg	HAM	9,971,163	2.1%	-0.2%	81,907	2.6%	15,411	-22.1%
41	Prague	PRG	9,809,434	5.0%	15.8%	78,716	0.0%	40,454	-2.9%
42	Budapest	BUD	8,973,019	7.2%	22.9%	64,193	5.6%	52,197	-3.1%
43	Alicante	ALC	8,565,535	8.3%	9.4%	56,818	7.0%	2,320	-1.2%
44	Edinburgh	EDI	8,528,904	5.6%	11.6%	73,382	3.1%	11,302	-1.1%
45	Nice	NCE	8,354,002	5.2%	10.1%	97,287	2.2%	6,990	-25.0%
46	Kyiv	KBP	8,325,666	21.2%	42.1%	60,248	14.4%	22,200	0.3%
47	Bucharest	OTP	8,317,330	7.6%	15.6%	68,865	1.4%	20,598	-4.6%
48	Ankara	ESB	8,198,720	-20.5%	-1.4%	54,284	-19.3%	5,862	-12.6%
49	Milan	BGY	7,817,976	5.3%	10.4%	51,517	3.2%	70,602	-3.9%
50	Gran Canaria	LPA	7,682,911	-0.9%	4.6%	69,576	-0.9%	10,739	-0.8%
51	Porto	OPO	7,450,992	10.4%	22.4%	55,073	5.4%	21,176	-0.6%
52	Birmingham	BHX	7,255,066	3.2%	-3.2%	59,430	0.4%	17,967	-10.2%
53	Izmir	ADB	7,120,953	-9.2%	0.0%	44,122	-8.1%	20,098	122.6%
54	Stuttgart	STR	7,099,492	9.2%	16.5%	67,130	7.9%	14,475	-8.2%
55	Cologne	CGN	6,913,088	-1.1%	0.0%	74,231	0.1%	466,393	-4.0%
56	Lyon	LYS	6,875,470	8.4%	16.1%	67,414	6.0%	33,066	1.1%
57	Berlin	SXF	6,765,624	-8.4%	-8.0%	48,289	-9.0%	6,791	10.0%
58	Venice	VCE	6,546,634	5.4%	13.4%	51,600	3.3%	30,492	-7.7%
59	Tenerife	TFS	6,505,977	3.9%	0.8%	38,965	5.7%	1,297	-5.7%
60	Naples	NAP	6,123,192	10.8%	33.4%	44,172	8.3%	5,007	8.9%
61	Marseille	MRS	5,791,256	8.4%	12.9%	56,785	6.2%	35,201	7.8%
62	Catania	CTA	5,771,749	4.2%	13.1%	42,033	5.8%	1,416	-38.6%
63	Toulouse	TLS	5,585,424	-0.1%	4.7%	51,255	-1.2%	39,660	-2.5%
64	Bologna	BLQ	5,360,724	10.1%	15.0%	42,152	8.5%	20,074	-3.2%
65	Basel	BSL	5,172,372	9.5%	17.0%	44,403	8.2%	36,210	-0.3%
66	Glasgow	GLA	5,148,929	-8.3%	-9.5%	45,561	-7.4%	7,382	-8.3%
67	Faro	FAO	5,146,268	5.7%	3.9%	33,867	5.4%	60	39.5%
68	Milan	LIN	5,021,136	-6.4%	-9.5%	53,296	-2.0%	6,005	-9.3%
69	Valencia	VLC	4,859,259	11.6%	31.9%	38,091	7.6%	8,703	2.0%
70	Charleroi	CRL	4,735,167	2.8%	7.9%	28,858	3.1%	145	-51.5%
71	Krakow	KRK	4,593,065	20.4%	40.8%	32,527	15.0%	704	22.4%
72	Ibiza	IBZ	4,503,359	1.2%	5.5%	34,963	-0.3%	870	-9.5%
73	Larnaca	LCA	4,492,527	1.4%	7.2%	32,748	-6.9%	17,080	1.7%
74	Riga	RIX	4,392,614	10.2%	29.5%	47,843	5.0%	8,835	-19.1%
75	Sevilla	SVQ	4,360,044	21.3%	53.2%	31,247	19.0%	5,404	-33.4%
76	Bordeaux	BOD	4,322,643	12.3%	20.2%	38,260	9.5%	6,766	10.1%
77	Keflavik	KEF	4,316,711	-22.2%	-11.4%	28,160	-20.3%	30,908	-6.4%
78	Lanzarote	ACE	4,240,176	1.2%	1.6%	33,626	1.3%	850	-6.3%
79	Heraklion	HER	4,150,119	-2.0%	8.6%				
80	Nantes	NTE	4,134,119	18.0%	33.9%	37,020	10.3%	5,049	1.1%
81	Sofia	SOF	4,126,699	2.3%	10.1%	31,261	0.4%	12,576	8.3%
82	Malta	MLA	4,057,593	5.5%	21.9%	29,347	4.0%	9,117	-1.8%



			PASSENGERS			COMMERCIAL MOVEMENTS		FREIGHT	
			YTD July2019			YTD July2019		YTD July2019	
CITY		CODE	2019/18		2019/17	2019/18		2019/18	
83	Palermo	PMO	3,966,152	7.5%	24.9%	29,318	8.8%	211	17.2%
84	Göteborg	GOT	3,891,743	-2.1%	-0.3%	37,498	-2.8%	4,633	2.0%
85	Sochi	AER	3,865,546	8.0%	20.2%	23,970	6.1%	1,457	5.9%
86	Eindhoven	EIN	3,843,476	8.4%	18.8%	22,696	7.0%		
87	Thessaloniki	SKG	3,830,341	5.1%	8.3%				
88	Bergen	BGO	3,679,380	3.7%	6.6%	48,149	4.6%	2,587	5.1%
89	Hanover	HAJ	3,502,318	0.5%	8.7%	31,170	-0.6%	5,418	6.4%
90	Rome	CIA	3,401,338	0.7%	-0.8%	20,342	-0.3%	10,671	1.1%
91	Bilbao	BIO	3,373,545	9.2%	18.9%	28,344	6.4%	582	-12.2%
92	Belgrade	BEG	3,347,879	6.7%	13.7%	34,735	5.9%	10,208	-16.7%
93	Tenerife	TFN	3,291,733	6.0%	29.4%	41,111	4.9%	7,615	4.4%
94	Fuerteventura	FUE	3,244,443	-7.7%	-4.5%	26,353	-8.2%	408	-15.9%
95	Bari	BRI	3,100,844	12.5%	18.2%	22,241	10.1%	146	4.3%
96	Adana	ADA	3,016,768	-10.5%	-4.9%	18,969	-10.2%	1,905	-9.1%
97	Newcastle	NCL	3,003,390	-2.1%	1.1%	23,522	-3.8%	383	33.4%
98	Rhodes	RHO	2,868,844	-1.0%	7.3%				
99	Vilnius	VNO	2,837,044	1.0%	33.0%	26,153	0.1%	6,193	9.5%
100	Minsk	MSQ	2,779,594	12.5%	35.5%	30,517	9.6%	6,205	-2.1%
101	East Midlands	EMA	2,689,966	-2.6%	-3.5%	33,930	-2.3%	191,586	-0.1%
102	Cagliari	CAG	2,604,608	8.8%	13.7%	18,859	11.4%	768	-28.1%
103	Trondheim	TRD	2,473,563	-1.2%	-1.6%	28,545	-2.0%	1,214	5.2%
104	Stavanger	SVG	2,455,868	1.8%	3.6%	36,430	6.4%	5,791	3.4%
105	Luxembourg	LUX	2,447,525	7.4%	22.5%	39,904	1.7%	470,297	-8.4%
106	Turin	TRN	2,356,216	-1.5%	-5.3%	20,848	-5.3%	161	-3.6%
107	Bodrum	BJV	2,321,460	2.0%	24.0%	14,960	2.9%	100	143.9%
108	Tbilisi	TBS	2,254,728	7.2%	36.0%	22,016	3.5%	14,019	1.1%
109	Nürnberg	NUE	2,214,895	-8.2%	-2.6%	23,910	-8.2%	3,253	-17.1%
110	Trabzon	TZX	2,140,684	-9.6%	-4.0%	13,431	-9.3%	498	77.9%
111	Billund	BLL	2,133,783	4.3%	10.1%	22,767	4.4%	41,773	-0.4%
112	Verona	VRN	2,057,051	6.6%	16.5%	17,002	2.8%	433	8.5%
113	Wroclaw	WRO	2,006,509	8.6%	26.3%	16,079	5.8%	160	-69.2%
114	Treviso	TSF	1,929,678	1.5%	9.6%	11,393	1.0%		
115	Menorca	MAH	1,895,294	2.5%	2.4%	16,537	3.1%	704	-0.4%
116	Zagreb	ZAG	1,894,659	2.5%	12.4%	23,182	3.4%	4,917	-7.1%
117	Funchal	FNC	1,871,211	1.5%	-0.1%	13,849	-0.2%	2,558	50.2%
118	Tallinn	TLL	1,835,207	9.0%	25.7%	23,362	0.1%	4,603	-13.7%
119	Split	SPU	1,818,965	6.3%	19.4%	14,950	5.0%	152	-6.7%
120	Tirana	TIA	1,796,867	11.2%	27.1%	15,080	8.6%	1,068	8.1%
121	Rostov	ROV	1,774,516	-3.9%	18.2%	14,450	-6.4%	2,164	-20.1%
122	Corfou	CFU	1,735,410	-2.5%	15.4%				
123	Aberdeen	ABZ	1,713,578	-4.4%	-0.8%	46,904	-1.1%	3,644	4.2%
124	Chisinau	KIV	1,684,366	5.7%	9.4%	15,767	-1.7%	1,524	-26.3%
125	Paphos	PFO	1,682,818	7.9%	23.3%	10,569	8.3%	136	4.6%
126	Cluj	CLJ	1,642,188	3.0%	8.1%	13,939	1.4%	1,955	24.0%
127	Chania	CHQ	1,623,079	-3.0%	-4.2%				
128	Florence	FLR	1,615,952	3.4%	6.2%	16,487	3.5%	53	20.5%
129	Bourgas	BOJ	1,577,724	-12.9%	-2.3%	10,142	-14.8%	3,117	-37.3%
130	Dubrovnik	DBV	1,574,407	14.3%	25.5%	12,616	11.0%	74	-30.2%
131	Brindisi	BDS	1,509,818	7.3%	14.5%	10,184	7.4%	753	745.5%

			PASSENGERS			COMMERCIAL MOVEMENTS		FREIGHT	
			YTD July2019			YTD July2019		YTD July2019	
CITY		CODE	2019/18		2019/17	2019/18		2019/18	
132	Cork	ORK	1,499,283	9.6%	12.8%	12,647	7.6%	25	-30.6%
133	Stockholm	BMA	1,372,900	-4.1%	-5.0%	26,342	0.4%	25	-35.9%
134	Tromsoe	TOS	1,372,362	0.9%	4.5%	19,996	-5.6%	1,157	22.4%
135	Kos	KGS	1,360,231	1.8%	20.2%				
136	Pristina	PRN	1,338,996	11.8%	26.7%	10,000	13.1%	578	-8.8%
137	Poznan	POZ	1,325,269	-4.7%	33.9%	10,978	-7.4%	46	-2.1%
138	Stockholm	NYO	1,323,304	2.4%	9.0%	8,281	0.7%	230	152.7%
139	Skopje	SKP	1,301,059	7.1%	29.3%	10,255	5.0%	2,000	41.4%
140	Bremen	BRE	1,279,929	-13.1%	-9.6%			281	-18.1%
141	Bratislava	BTS	1,275,885	2.0%	22.7%	10,134	-4.5%	11,833	-22.6%
142	Santorini Thira	JTR	1,163,968	-2.9%	14.0%				
143	Ponta Delgada	PDL	1,153,939	7.9%	10.0%	11,864	7.6%	2,797	-4.2%
144	Malmo	MMX	1,135,646	-8.9%	-9.7%	12,382	-14.3%	5,516	0.5%
145	Varna	VAR	1,108,424	-13.4%	8.8%	7,691	-17.7%	73	17.7%
146	Salzburg	SZG	1,082,292	-8.3%	-12.4%	10,074	-12.1%	50	-56.5%
147	Girona	GRO	1,080,965	-5.8%	-1.8%	6,708	-6.6%	47	-58.4%
148	Ljubljana	LJU	1,066,977	3.6%	15.8%	15,567	-1.3%	5,889	-6.0%
149	Bodo	BOO	1,051,630	1.0%	-1.2%	19,930	-1.8%	737	17.9%
150	Southampton	SOU	1,050,428	-9.2%	-11.5%	18,294	-10.1%	120	-8.4%
151	Memmingerberg	FMM	1,027,486	24.6%	65.9%	6,300	23.0%		
152	Jersey	JER	996,889	8.6%	8.0%	14,342	8.1%	477	-10.3%
153	Shannon	SNN	976,928	-8.2%	-1.9%	7,679	-4.7%	7,118	-5.5%
154	Zakynthos Island	ZTH	957,266	1.9%	13.6%	1,363	0.1%		
155	Hahn	HHN	921,040	-27.7%	-35.7%	9,098	-16.1%	78,842	-10.9%
156	Ajaccio	AJA	921,015	-1.5%	6.2%			3,418	8.7%
157	Bastia	BIA	863,849	3.4%	11.8%			3,347	84.1%
158	Timisoara	TSR	861,314	-1.4%	-6.5%	8,826	-2.6%	3,009	-15.0%
159	Mikonos	JMK	789,733	9.7%	27.6%				
160	Iasi	IAS	749,076	13.5%	18.9%	6,816	3.5%	7	-41.7%
161	Strasbourg	SXB	726,232	2.3%	11.8%	10,899	-4.0%	27	107.7%
162	Tivat	TIV	714,425	8.8%	17.9%	3,055	4.8%	29	-92.9%
163	Brest	BES	713,485	13.9%	17.3%	8,541	4.6%	2,668	34.8%
164	Podgorica	TGD	705,921	7.3%	25.1%	3,765	4.7%	361	-5.2%
165	Kharkiv	HRK	683,258	25.4%	51.4%	5,068	11.4%	143	26.5%
166	Luleå	LLA	672,185	-2.4%	-3.5%	5,938	-7.2%	27	-78.0%
167	Kaunas	KUN	659,189	15.5%	0.8%	5,547	10.8%	1,842	12.5%
168	Aalesund	AES	651,112	2.3%	7.6%	7,190	-3.3%	560	-26.6%
169	Sarajevo	SJJ	638,663	8.3%	21.9%	6,571	2.3%	946	-3.4%
170	Oulu	OUL	609,046	-1.4%	26.8%				
171	Biarritz	BIQ	603,262	-9.2%	-11.0%	5,388	-11.5%		
172	Kristiansand	KRS	601,913	1.7%	4.2%	8,824	5.6%	602	-64.8%
173	Graz	GRZ	595,323	2.5%	7.0%	8,599	-0.1%	79	-24.0%
174	Umeå	UME	552,926	-6.9%	-7.9%	6,786	-19.7%	29	-68.8%
175	Muenster	FMO	520,473	-0.8%	1.7%	6,018	-4.3%	56	43.6%
176	Isle Of Man	IOM	505,761	4.1%	7.8%	12,177	-10.0%	79	-21.0%
177	Kutaisi	KUT	450,133	45.2%	93.6%	2,921	31.3%		
178	Harstad	EVE	449,650	1.0%	1.3%	5,177	3.1%	208	-11.5%
179	Trieste	TRS	444,967	0.7%	-1.3%	5,069	7.8%	55	-46.6%
180	Zadar	ZAD	440,083	34.0%	37.5%	4,164	22.5%	7	-22.2%

			PASSENGERS			COMMERCIAL MOVEMENTS		FREIGHT	
			YTD July2019			YTD July2019		YTD July2019	
CITY		CODE	2019/18		2019/17	2019/18		2019/18	
181	Sibiu	SBZ	409,419	17.2%	38.1%	4,017	-2.4%	8	-77.8%
182	Kefallinia	EFL	403,494	1.3%	27.6%				
183	Rovaniemi	RVN	353,300	8.2%	18.0%				
184	Batumi	BUS	347,838	15.3%	50.3%	3,488	5.8%		
185	Craiova	CRA	293,854	3.3%	21.5%	1,883	-0.3%		
186	Ostersund	OSD	291,462	-7.0%	-6.1%	4,216	-0.9%	12	-61.3%
187	Brno	BRQ	287,783	10.4%	14.9%	2,614	-10.4%	2,130	-4.9%
188	Newquay	NQY	272,887	21.5%	3.9%	4,685	6.7%		
189	Visby	VBY	267,115	-5.5%	-9.8%	5,518	-4.2%	27	-52.6%
190	Bacau	BCM	265,205	3.4%	-11.0%	2,112	-4.1%		
191	Grenoble	GNB	261,751	-13.9%	-11.2%	3,170	4.7%		
192	Mytilene	MJT	261,426	5.8%	11.0%				
193	Clermont-Ferrand	CFE	255,809	0.8%	16.4%	5,116	-1.3%	1,467	256.9%
194	Friedrichshafen	FDH	253,294	-16.7%	-12.8%	4,132	6.8%	13	18.2%
195	Ostend	OST	244,793	12.3%	29.1%	2,195	-2.1%	13,194	-7.7%
196	Trapani	TPS	243,736	-12.1%	-70.3%	2,626	-8.1%	8	-20.0%
197	Turku	TKU	241,534	12.8%	29.0%				
198	Molde	MOL	239,335	-3.8%	-13.3%	3,216	-6.5%	130	-4.4%
199	Alta	ALF	218,304	-4.4%	-2.1%	3,570	-6.1%	415	32.2%
200	Angelholm	AGH	217,710	-4.7%	-6.4%	4,035	6.7%		
201	Lublin	LUZ	201,649	-28.9%	-10.9%	1,507	-32.3%		
202	Nis	INI	201,304	-2.2%	10.6%	1,349	-1.8%	768	124.6%
203	Palanga	PLQ	188,317	3.0%	10.1%	2,189	-4.9%		
204	Kirkenes	KKN	185,475	2.1%	-0.4%	3,616	7.2%	247	23.5%
205	Chambery	CMF	182,751	1.5%	10.9%	5,418	-1.3%		
206	Calvi	CLY	182,629	1.0%	5.0%				
207	Kristiansund	KSU	179,290	1.4%	5.7%	5,015	-9.8%	54	-20.6%
208	Caen	CFR	178,985	22.2%	123.2%	3,315	2.4%		
209	Ostrava	OSR	174,935	-13.6%	1.9%	2,119	-32.9%	928	45.0%
210	Vaasa	VAA	173,844	-5.8%	3.5%				
211	Kiruna	KRN	163,347	-3.7%	-8.3%	1,730	1.9%	7	-88.3%
212	Ohrid	OHD	156,425	56.4%	86.4%	1,142	64.6%		
213	Bardufoss	BDU	143,590	2.4%	0.4%	1,109	-14.6%	65	54.8%
214	Nimes	FNI	138,201	1.5%	26.0%	1,046	1.5%		
215	La Rochelle	LRH	138,033	-1.8%	9.4%	1,615	3.1%		
216	Tampere	TMP	134,792	5.1%	5.1%				
217	Svalbard	LYR	126,923	6.0%	18.4%	1,750	-5.4%	326	14.4%
218	Klagenfurt	KLU	125,240	-5.6%	1.9%	1,898	-5.9%		
219	Ronneby	RNB	114,226	-10.5%	-15.7%	2,267	-3.2%		
220	Targu Mures	TGM	94,011			749	416.6%		
221	Liège	LGG	88,731	-0.2%	-14.5%	17,334	0.7%	510,126	5.6%
222	Hammerfest	HFT	85,850	-8.7%	-21.5%	4,834	-9.5%	102	-9.7%
223	Floro	FRO	82,043	0.7%	2.4%	4,690	5.4%	33	-60.7%
224	Leknes	LKN	75,008	-6.3%	-2.8%	2,876	-15.0%	56	124.0%
225	Bronnoysund	BNN	74,118	-0.7%	7.2%	3,406	-3.6%	30	11.1%
226	Pardubice	PED	63,410	-38.6%	197.5%	408	-37.6%	60	87.5%
227	Orsta	HOV	61,636	-5.4%	-2.2%	2,402	-7.9%	18	-10.0%
228	Mo i Rana	MQN	58,624	-4.5%	-16.9%	2,406	-10.8%	110	8.9%
229	Stokmarknes	SKN	57,620	-12.0%	-12.4%	2,479	-22.9%	55	71.9%

			PASSENGERS			COMMERCIAL MOVEMENTS		FREIGHT	
			YTD July2019			YTD July2019		YTD July2019	
CITY		CODE	2019/18		2019/17	2019/18		2019/18	
230	Vadso	VDS	57,607	1.0%	-2.2%	3,575	1.7%		
231	Forde	FDE	48,047	0.0%	-1.2%	2,245	1.2%		
232	Monaco	MCM	45,652	3.9%	4.3%	18,875	5.1%		
233	Sogndal	SOG	44,636	-9.4%	-14.5%	2,812	-3.3%		
234	Sandnessjoen	SSJ	42,892	0.1%	-20.5%	1,902	-3.5%		
235	Mosjoen	MJF	39,867	-0.8%	-12.2%	1,824	-8.7%		
236	Bucharest	BBU	13,538	30.8%	55.0%	1,533	21.1%		
237	Mostar	OMO	13,166	-0.5%	-38.0%	295	16.6%		
238	Saint-Nazaire	SNR	11,827	-8.3%	-18.2%	1,026	4.2%	11,154	-3.5%
239	Taranto	TAR	819	297.6%	687.5%	154	-1.3%	4,465	11.6%
240	Foggia	FOG	247	-33.8%	-13.3%				

## **DEFINITIONS**

### **Passengers**

Revenue and non-revenue passengers arriving or departing via commercial aircraft and helicopters on a scheduled or non-scheduled flight.

#### **Domestic**

Traffic (passengers and freight) performed between airports located within the same country or territory.

#### **International**

Traffic (passengers and freight) performed between the designated airport and an airport in another country or territory.

### **Freight**

Freight is any property carried on an aircraft other than mail, stores and baggage.

### **Movements / Aircraft movement**

A movement is a landing or take-off of an aircraft or helicopter at an airport operating a scheduled or non-scheduled service.

#### **Cargo only**

Movements by aircraft and helicopters operated for commercial transport operations involving freight and/or mail, but not passengers (excluding air taxi and business flights).

#### **PAX + Freight combined**

Movements by aircraft and helicopters operated for commercial transport operations involving passengers, freight and/or mail (excluding air taxi and business flights).

### **Geographical coverage**

#### **Europe**

Refers to all the countries and territories in the continent of Europe.

#### **EU**

Refers to airports located in the 28 Member States of the European Union.

#### **Non-EU**

Refers to European countries that are not members of the European Union. These currently include Albania, Belarus, Bosnia and Herzegovina, Former Yugoslav Republic of Macedonia, Georgia, Iceland, Israel, Montenegro, Norway, Russian Federation, Serbia, Switzerland, Turkey and Ukraine.





Airports Council International has been tracking airport traffic data for over 25 years. As part of that, here in Europe ACI EUROPE has published a dedicated airport traffic report every month for over 10 years. The data available comprises the most comprehensive reporting of passenger traffic figures available (including the network, low cost, charter and other airlines) as well as freight figures and aircraft movements. The report also provides insights into the average traffic performance in the various countries in continental Europe and a breakdown of the average growth in our 4 traffic categories for airports).

ACI EUROPE is the European region of Airports Council International (ACI), the only worldwide professional association of airport operators. ACI EUROPE represents close to **500 airports** in 45 European countries. In 2015, our member airports handled over 90% of commercial air traffic in Europe, welcoming more than **1.9 billion passengers, 18.9 million tonnes of freight** and **22.8 million aircraft movements**. These airports contribute to the employment of **12.3 million people**, generating **€675 billion** each year (**4.1%**) of GDP in Europe.

**EVERY FLIGHT BEGINS AT THE AIRPORT.**

[www.aci-europe.org](http://www.aci-europe.org)

Twitter: @ACI\_EUROPE

Produced by ACI EUROPE

© Copyright ACI EUROPE 2017